



# BizualBuilder Server

## Install Guide

Business Visualization Builder - Dashboard Builder

---

## Contents

|   |          |
|---|----------|
| <b>1. Overview.....</b>                           | <b>4</b> |
| <b>2. Environment .....</b>                       | <b>6</b> |
| 2.1. Product Architecture.....                    | 6        |
| 2.2. H/W, S/W Configuration .....                 | 6        |
| 2.3. Example of Configuration .....               | 7        |
| 2.4. Requirements .....                           | 7        |
| <b>3. Prerequisites.....</b>                      | <b>8</b> |
| 3.1. Java Development Kit .....                   | 8        |
| 3.1.1. JDK Download Website .....                 | 8        |
| 3.1.2. Example of JDK Installation on Linux ..... | 8        |
| <b>4. Server Installation .....</b>               | <b>9</b> |
| 4.1. Download.....                                | 9        |
| 4.1.1. Download Website.....                      | 9        |
| 4.1.2. Apply Summary .....                        | 9        |
| 4.2. Server Release Installation .....            | 10       |
| 4.3. Client Update Setup .....                    | 11       |
| 4.4. Server Update Setup .....                    | 12       |

## Figures

|  |   |
|--|---|
| [Figure 1-1] Product Overview.....         | 4 |
| [Figure 2-1] H/W, S/W Configuraion.....    | 6 |
| [Figure 2-2] Example of Configuration..... | 7 |

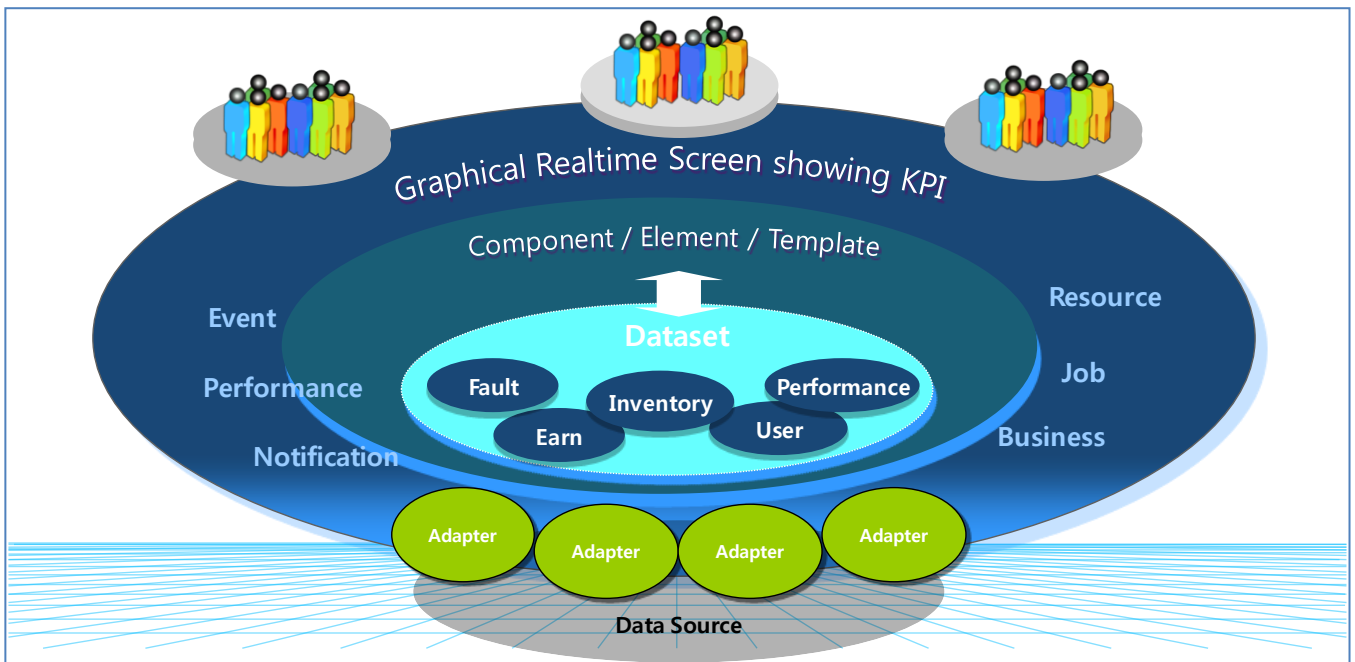
## Tables

|   |   |
|---|---|
| [Table 2-1] Product Architecture.....     | 6 |
| [Table 2-2] Server Requirements .....     | 7 |
| [Table 2-3] Product Specification.....    | 7 |
| [Table 3-1] JDK Download Website.....     | 8 |
| [Table 4-1] Product Download Website..... | 9 |
| [Table 4-2] Apply Summary .....           | 9 |

# 1. Overview

The BizualBuilder is a powerful, flexible and easy dashboard builder product. It helps you to create a dashboard screen quickly and easily.

It provides various components such as chart, gauge, grid, counter and label for creating dashboard screen. And also, it provides efficient editing and management functions and predefined styles.



[Figure 1-1] Product Overview

The main features are as follows:

- Various Effective Components
  - ✓ Comes with various visual components such as charts, gauges, grids, counters and more
  - ✓ Provide components that specializes in monitoring IT infrastructure such as node, event grid, ticker and more
- Ease of Use
  - ✓ Support drag & drop, zoom in/out, move, resize the elements
  - ✓ Support copy & paste elements, adapters, datasets
  - ✓ Support grouping the elements
  - ✓ Support a preview of the data and a preview of the dashboard screen
  - ✓ Support the multi-tabbed window
- Extendable Usage
  - ✓ Can re-use the elements that others have set
  - ✓ Can share your dashboard screen with others
  - ✓ Support tagging to each factors of management

- ✓ Can use uploaded images from local PC
- Editable Property
  - ✓ All elements of the component have many detailed properties
  - ✓ Can modify properties as you like
  - ✓ All elements have a property for mapping of data, event and action
  - ✓ Can select the display effect of the element in the event mapping
- Pre-defined Style
  - ✓ Can be used instantly without any settings
  - ✓ Adopted concept of portlets
  - ✓ Can modify settings again as you like
  - ✓ Comes with pre-defined samples of the adapter, dataset, template
  - ✓ Provide various pre-designed images
- Data Filtering and Mapping
  - ✓ Can filter and map the data for your purpose
  - ✓ Filtered data is reused
  - ✓ No extra load to data sources or servers
- Data Source Support
  - ✓ Connect directly to various data sources in real-time
  - ✓ Support many relational databases such as Oracle, DB2, SQL Server, MySQL, Sybase, Cubrid, MariaDB, PostgreSQL, Derby, Tibero
  - ✓ Support Object Server database of IBM Tivoli OMNIbus product
  - ✓ Support WAREHOUS database of IBM Tivoli Monitoring product
  - ✓ Support SOAP protocol of IBM Tivoli Monitoring product
- Security
  - ✓ User password to connect to the server is handled in encrypted form
  - ✓ User account is classified in manager, operator, user depending on the authority
  - ✓ Operators and users can see only the dashboard that is shared

## 2. Environment

### 2.1. Product Architecture

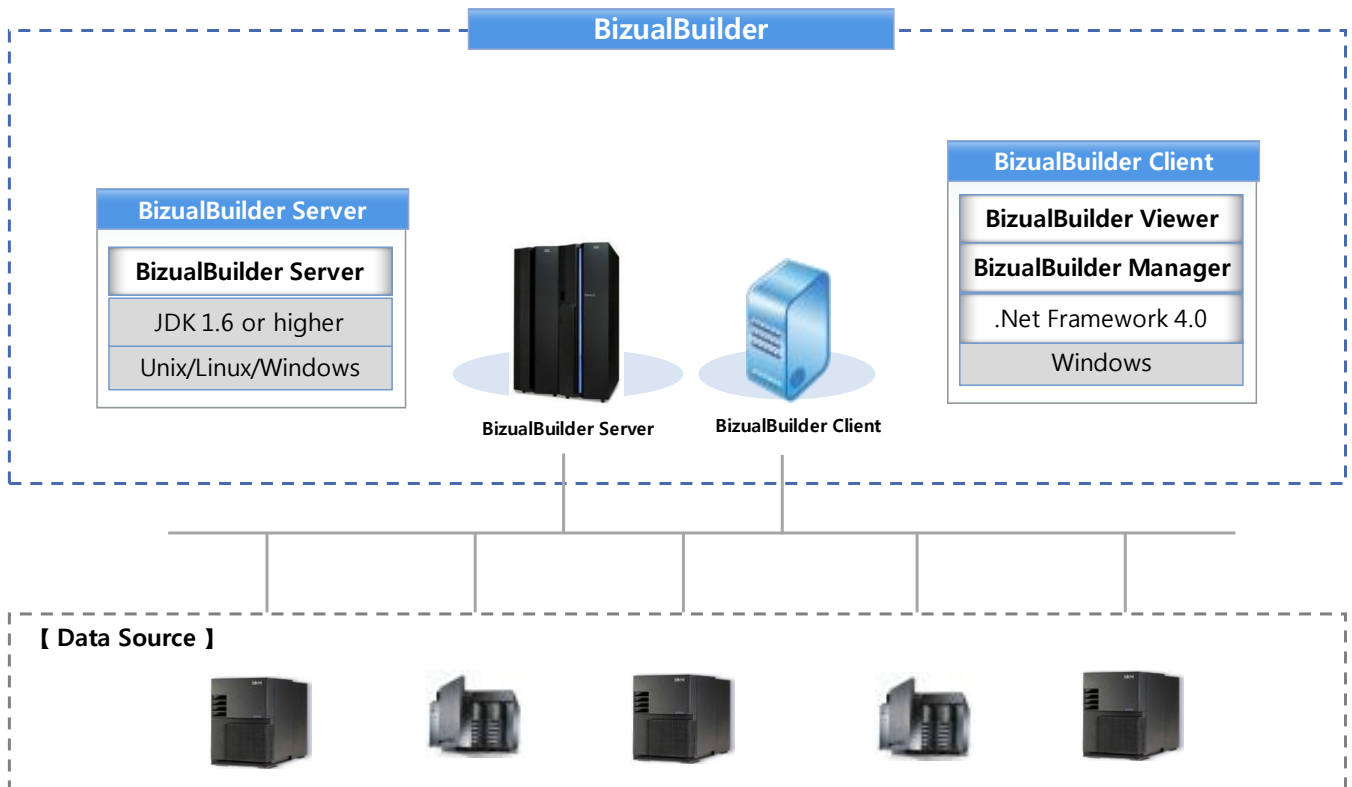
The BizualBuilder product consists of a server and clients. Detailed architecture is as follows:

| Type   | Name                  | Description   | Remarks                  |
|--------|-----------------------|---|--------------------------|
| Server | BizualBuilder Server  | Connects to data sources and manages data transfer to the clients           | JDK based                |
| Client | BizualBuilder Manager | Provides and manages diverse functions to build and edit a dashboard screen | .Net Framework 4.0 based |
|        | BizualBuilder Viewer  | Displays the created dashboard screens                                      |                          |

[Table 2-1] Product Architecture

### 2.2. H/W, S/W Configuration

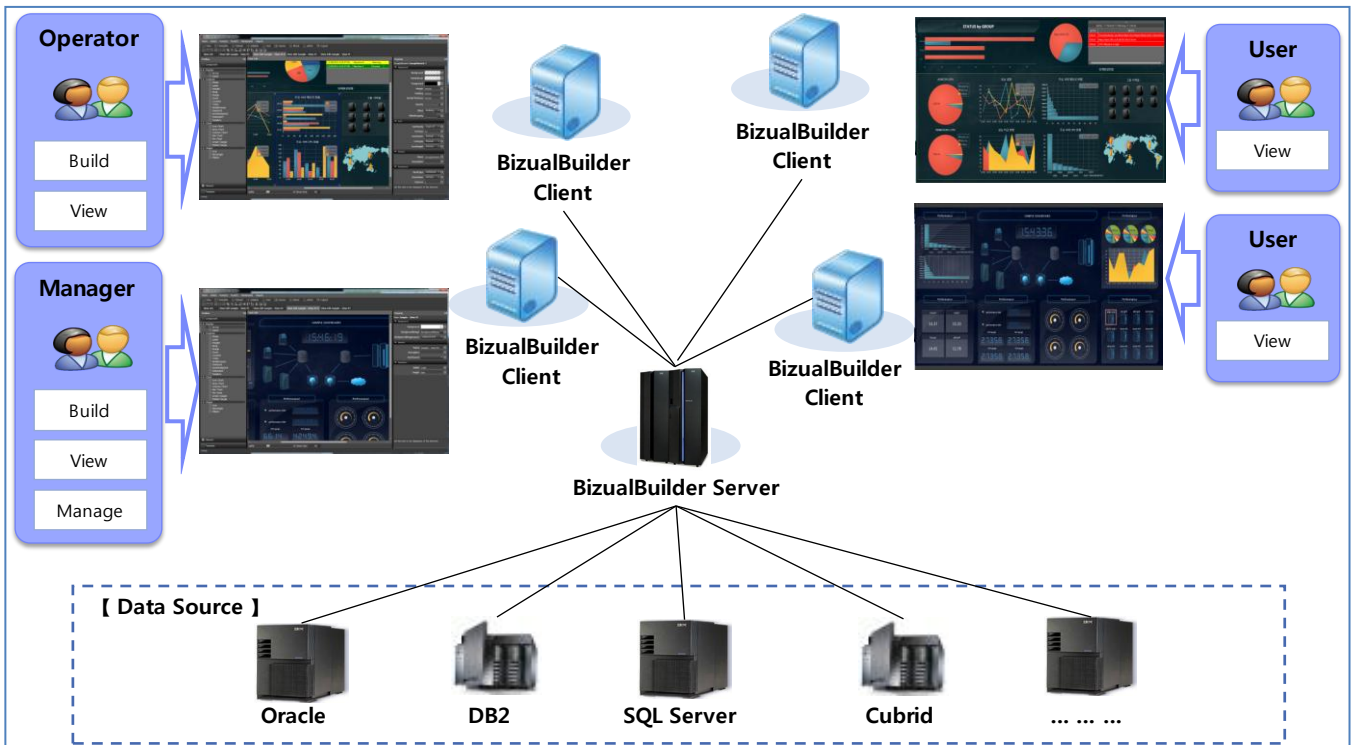
Configuration of hardware and software is as follows:



[Figure 2-1] H/W, S/W Configuration

### 2.3. Example of Configuration

Example of configuration is as follows:



[Figure 2-2] Example of Configuration

### 2.4. Requirements

The BizualBuilder Server runs with Java Application Server, so you must meet the followings.

| Name                 | Supported Version <sup>1</sup> | Supported OS       | Remarks               |
|----------------------|--------------------------------|--------------------|-----------------------|
| Java Development Kit | 1.6 or higher                  | Unix/Linux/Windows | Other Java-enabled OS |

[Table 2-2] Server Requirements

The BizualBuilder product must meet the followings.

| Name                 | Supported OS       | CPU              | MEMORY         | DISK             |
|----------------------|--------------------|------------------|----------------|------------------|
| BizualBuilder Server | Unix/Linux/Windows | 2 Core or higher | 4 GB or higher | 200 MB or higher |
| BizualBuilder Client | Windows            | 2 Core or higher | 4 GB or higher | 200 MB or higher |

[Table 2-3] Product Specification

\* Requirement specifications may be higher depending on the number of connection to the data source and the data amount. In the client PC, the external graphic card is recommended.

<sup>1</sup> The product is tested on JDK 1.6/1.7 versions. If JDK 1.8 or higher, request the war file to vendor.



### 3. Prerequisites

#### 3.1. Java Development Kit

The BizualBuilder Server runs with Java Application Server, so you must install Java first. For information about how to download and install Java, visit the site of each of the operating system-specific.

In this case, it shows a simple example of the setup on linux and address of the download site of each operating system.

##### 3.1.1. JDK Download Website

| OS                    | Name        | URL Address   | Etc |
|-----------------------|-------------|---|-----|
| Windows/Linux/Solaris | Oracle Java | <a href="http://www.oracle.com/technetwork/java/javase/downloads/index.html">http://www.oracle.com/technetwork/java/javase/downloads/index.html</a>   |     |
| AIX                   | IBM Java    | <a href="http://www.ibm.com/developerworks/java/jdk/aix/service.html">http://www.ibm.com/developerworks/java/jdk/aix/service.html</a>   |     |
| HP-UX                 | HP Java     | <a href="http://h20392.www2.hp.com/portal/swdepot/displayProductInfo.do?productNumber=HPUXJAVAHOME">http://h20392.www2.hp.com/portal/swdepot/displayProductInfo.do?productNumber=HPUXJAVAHOME</a> |     |

[Table 3-1] JDK Download Website

##### 3.1.2. Example of JDK Installation on Linux

JDK installation process on a Linux operating system is as follows:

- ① Download the JDK file (.tar.gz) to a temporary directory by referring to the download site above.
- ② Move the downloaded ".tar.gz" file to the install directory. (ex: /usr)
- ③ Unpack the ".tar.gz" file as follows.
 

```
# tar zxvf <downloaded .tar.gz file>
```
- ④ Change directory to the "bin" sub-directory of the installed directory.
- ⑤ Make sure that it is installed correctly with the following command.
 

```
# ./javac
```
- ⑥ Delete the ".tar.gz" file if you want to save disk space.

## 4. Server Installation

### 4.1. Download

The BizualBuilder product is consists with a server and clients. You can download and apply the update and release version from the web site.

New installation, download and install the release version. After that, download the update file, it is applied to the server. After the first installation, client is updated automatically at login time.

The download website of release version and update file of the product is as follows.

#### 4.1.1. Download Website

| Type              | Download            | URL Address                  | Etc |
|-------------------|---------------------|------------------------------|-----|
| New Install       | Release Version     | http://www.BizualBuilder.com |     |
| Installed already | Update <sup>1</sup> |                              |     |

[Table 4-1] Product Download Website

#### 4.1.2. Apply Summary

| Type              | Download               | Apply   | Etc |
|-------------------|------------------------|---|-----|
| New Install       | Server Release Version | Install Release on Server                                   |     |
|                   | Client Update          | Setup Update on Server<br>(Client is updated automatically) |     |
|                   | Client Release Version | Install Release on Client                                   |     |
| Installed already | Server Update          | Setup Update on Server                                      |     |
|                   | Client Update          | Setup Update on Server<br>(Client is updated automatically) |     |

[Table 4-2] Apply Summary

<sup>1</sup> You must download and apply a higher version than the version currently in use.

## 4.2. Server Release Installation

New installation, download the server release version and setup on your server. First, JDK must be installed.

Server release setup process is as follows:

- ① Download the Server Release file (.zip) to a temporary directory by referring the download site above.
- ② Transfer the downloaded ".zip" file to the temporary directory of the server through ftp.
- ③ Connect to the server and make directory to install. (Ex: /usr/bizualbuilder)  
`# mkdir -p /usr/bizualbuilder`
- ④ Move the transferred ".zip" file to the installing directory and extract as follows.  
`# unzip -o <transferred .zip file>`  
or  
`# jar xvf <transferred .zip file>`
- ⑤ Give execution permission to the script files as follows.  
`# chmod +x *.sh`
- ⑥ Set the values of the JAVA\_HOME, PORT variables in the configuration file(env.cfg).  
JAVA\_HOME=<installed JDK directory>  
PORT=<PORT Number>
- ⑦ Start the server as follows.  
`# ./startup.sh`
- ⑧ Verify the status of the server as follows.  
`# ./jps.sh`
- ⑨ Make sure that it is installed correctly by connecting the following in the web browser from the PC.  
`https://<IP Address of the Server>:<PORT>/SBServerEngine`
- ⑩ Delete the ".zip" file if you want to save disk space.

### 4.3. Client Update Setup

If there is client update, download the client update file and applied it to the server. After setup on the server, client is updated automatically at login time. You must download and apply a higher version than the version currently in use.

Client update setup process is as follows:

- ① Download the Client Update file (.zip) to a temporary directory by referring the download site above.
- ② Transfer the downloaded ".zip" file to the temporary directory of the server through ftp.
- ③ Connect to the server and move the transferred ".zip" file to the "<installed directory>/WebContent/productfiles/Update" directory of the server.
- ④ Extract the ".zip" file as follows. Overwrite if there is a duplicate file.  

```
# unzip -o <transferred .zip file>
```

or

```
# jar xvf <transferred .zip file>
```
- ⑤ Delete the ".zip" file if you want to save disk space.

\* Not required to re-start the service.

#### 4.4. Server Update Setup

Installed already, download the server update file and setup on your server. You must download and apply a higher version than the version currently in use.

Server update setup process is as follows:

- ① Download the Server Update file (.zip) to a temporary directory by referring the download site above.
- ② Extract the downloaded ".zip" file.
- ③ Transfer the extracted "WebContent.zip" file to the temporary directory of the server through ftp.
- ④ Connect to the server and move the transferred "WebContent.zip" file to the installed directory of the server. (Ex: /usr/bizualbuilder)
- ⑤ Stop the server as follows.  

```
# cd /usr/bizualbuilder  
# ./shutdown.sh
```
- ⑥ Extract the file as follows. Overwrite if there is a duplicate file.  

```
# unzip -o WebContent.zip  
or  
# jar xvf WebContent.zip
```
- ⑦ Start the server as follows.  

```
# ./startup.sh
```
- ⑧ Delete the ".zip" file if you want to save disk space.

Unauthorized copy or reuse of the content in this document is prohibited. All rights reserved.

Copyright © 3HS, Inc.

#905, ACE TwinTower 1-cha, 212-1 Guro-dong, Guro-gu, Seoul, Korea

Phone 82 2 866 2012 • Fax 82 2 866 2013 • E-mail rnd@3hs.co.kr