



BizualBuilder Manager & Viewer

Install Guide

Business Visualization Builder - Dashboard Builder

Contents

1. Overview.....	4
2. Environment	6
2.1. Product Architecture.....	6
2.2. H/W, S/W Configuration	6
2.3. Example of Configuration	7
2.4. Requirements	7
3. Client Installation.....	8
3.1. Download.....	8
3.1.1. Download Website.....	8
3.1.2. Apply Summary	8
3.2. Client Release Installation	9
4. Uninstall Client.....	12

Figures

[Figure 1-1] Product Overview.....	4
[Figure 2-1] H/W, S/W Configuraion.....	6
[Figure 2-2] Example of Configuration.....	7
[Figure 3-1] Installation Wizard.....	9
[Figure 3-2] Select Installation Folder.....	9
[Figure 3-3] Confirm Installation	10
[Figure 3-4] Installing.....	10
[Figure 3-5] Installation Complete	10
[Figure 3-6] Manager Login.....	11
[Figure 3-7] Automatic Update	11

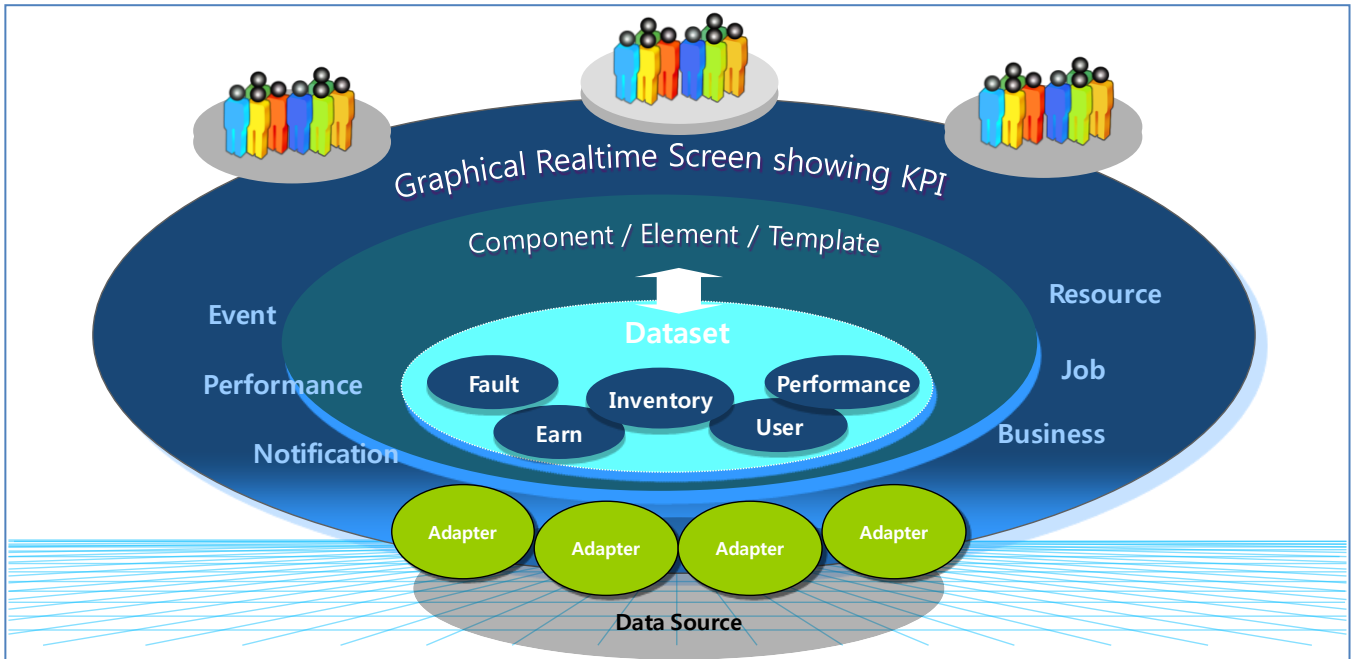
Tables

[Table 2-1] Product Architecture.....	6
[Table 2-2] Server Requirements	7
[Table 2-3] Product Specification.....	7
[Table 3-1] Product Download Website	8
[Table 3-2] Apply Summary	8

1. Overview

The BizualBuilder is a powerful, flexible and easy dashboard builder product. It helps you to create a dashboard screen quickly and easily.

It provides various components such as chart, gauge, grid, counter and label for creating dashboard screen. And also, it provides efficient editing and management functions and predefined styles.



[Figure 1-1] Product Overview

The main features are as follows:

- Various Effective Components
 - ✓ Comes with various visual components such as charts, gauges, grids, counters and more
 - ✓ Provide components that specialize in monitoring IT infrastructure such as node, event grid, ticker and more
- Ease of Use
 - ✓ Support drag & drop, zoom in/out, move, resize the elements
 - ✓ Support copy & paste elements, adapters, datasets
 - ✓ Support grouping the elements
 - ✓ Support a preview of the data and a preview of the dashboard screen
 - ✓ Support the multi-tabbed window
- Extendable Usage
 - ✓ Can re-use the elements that others have set
 - ✓ Can share your dashboard screen with others
 - ✓ Support tagging to each factor of management

- ✓ Can use uploaded images from local PC
- Editable Property
 - ✓ All elements of the component have many detailed properties
 - ✓ Can modify as you like each property
 - ✓ All elements have a property for mapping of data, event and action
 - ✓ Can select the display effect of the element in the event mapping
- Pre-defined Style
 - ✓ Can be used instantly without any settings
 - ✓ Adopted concept of portlets
 - ✓ Can modify settings again as you like
 - ✓ Comes with pre-defined samples of the adapter, dataset, template
 - ✓ Provide various pre-designed images
- Data Filtering and Mapping
 - ✓ Can filter and map the data for your purpose
 - ✓ Filtered data is reused
 - ✓ No extra load to data sources or servers
- Data Source Support
 - ✓ Connect directly to various data sources in real-time
 - ✓ Support many relational databases such as Oracle, DB2, SQL Server, MySQL, Sybase, Cubrid, MariaDB, PostgreSQL, Derby, Tibero
 - ✓ Support Object Server database of IBM Tivoli OMNIbus product
 - ✓ Support WAREHOUS database of IBM Tivoli Monitoring product
 - ✓ Support SOAP protocol of IBM Tivoli Monitoring product
- Security
 - ✓ User password to connect to the server is handled in encrypted form
 - ✓ User account is classified in manager, operator, user depending on the authority
 - ✓ Operators and users can see only the dashboard that is shared

2. Environment

2.1. Product Architecture

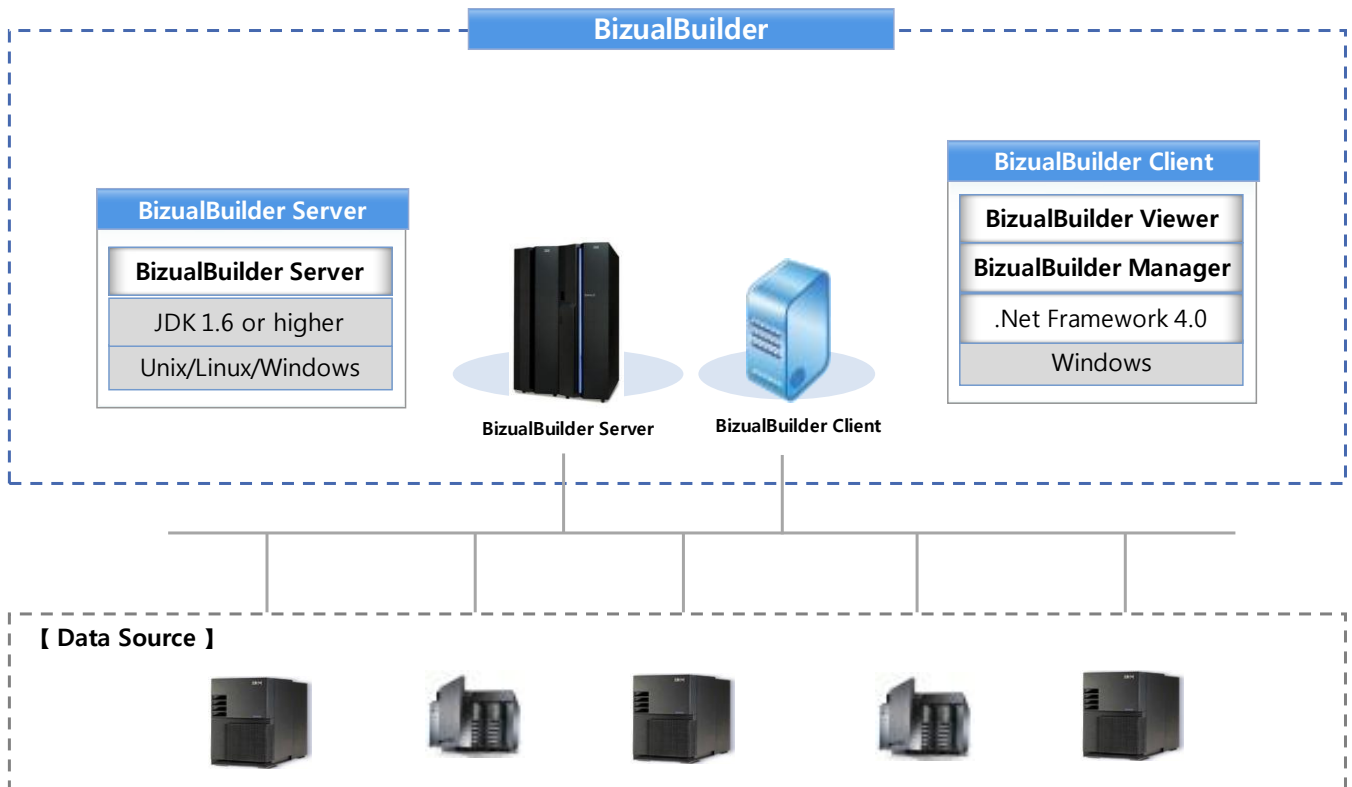
The BizualBuilder product consists of a server and clients. Detailed architecture is as follows:

Type	Name	Description	Remarks
Server	BizualBuilder Server	Connects to data sources and manages data transfer to the clients	JDK based
Client	BizualBuilder Manager	Provides and manages diverse functions to build and edit a dashboard screen	.Net Framework 4.0 based
	BizualBuilder Viewer	Displays the created dashboard screens	

[Table 2-1] Product Architecture

2.2. H/W, S/W Configuration

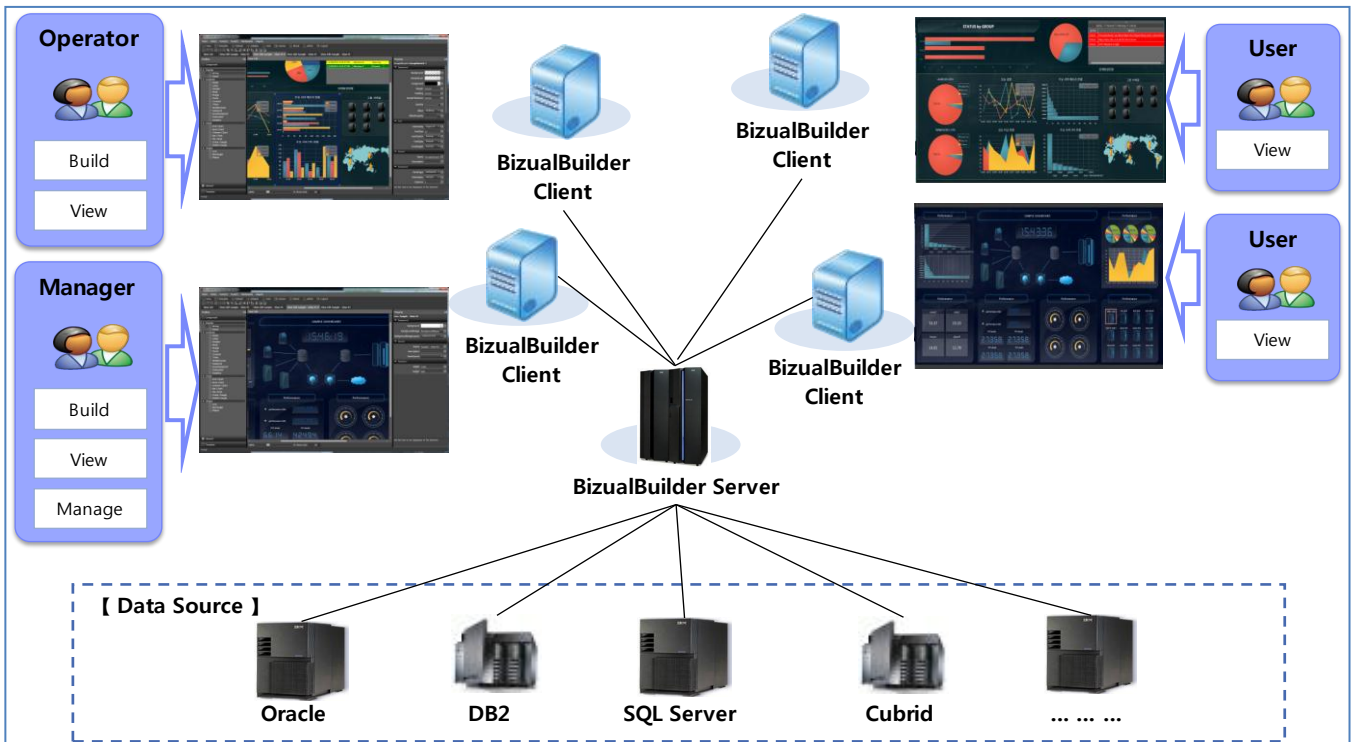
Configuration of hardware and software is as follows:



[Figure 2-1] H/W, S/W Configuration

2.3. Example of Configuration

Example of configuration is as follows:



[Figure 2-2] Example of Configuration

2.4. Requirements

The BizualBuilder Server runs with Java Application Server, so you must meet the followings.

Name	Supported Version ¹	Supported OS	Remarks
Java Development Kit	1.6 or higher	Unix/Linux/Windows	Other Java-enabled OS

[Table 2-2] Server Requirements

The BizualBuilder product must meet the followings.

Name	Supported OS	CPU	MEMORY	DISK
BizualBuilder Server	Unix/Linux/Windows	2 Core or higher	4 GB or higher	200 MB or higher
BizualBuilder Client	Windows	2 Core or higher	4 GB or higher	200 MB or higher

[Table 2-3] Product Specification

* Requirement specifications may be higher depending on the number of connection to the data source and the data amount.

¹ The product is tested on JDK 1.6/1.7 versions.

3. Client Installation

3.1. Download

The BizualBuilder product consists of a server and clients, you have support to be able to download and apply the update and release version.

New installation, download and install the release version. After that, download the update file, it is applied to the server. After the first installation, client is updated automatically at login time.

The download website of release version and update file of the product is as follows.

3.1.1. Download Website

Type	Download	URL Address	Etc
New Install	Release Version	http://www.BizualBuilder.com	
Installed already	Update		

[Table 3-1] Product Download Website

3.1.2. Apply Summary

Type	Download	Apply	Etc
New Install	Server Release Version	Setup Release on Server	
	Client Release Version	Install Release on Client ¹	
Installed already	Server Update	Setup Update on Server	
	Client Update	Setup Update on Server (Client is updated automatically)	

[Table 3-2] Apply Summary

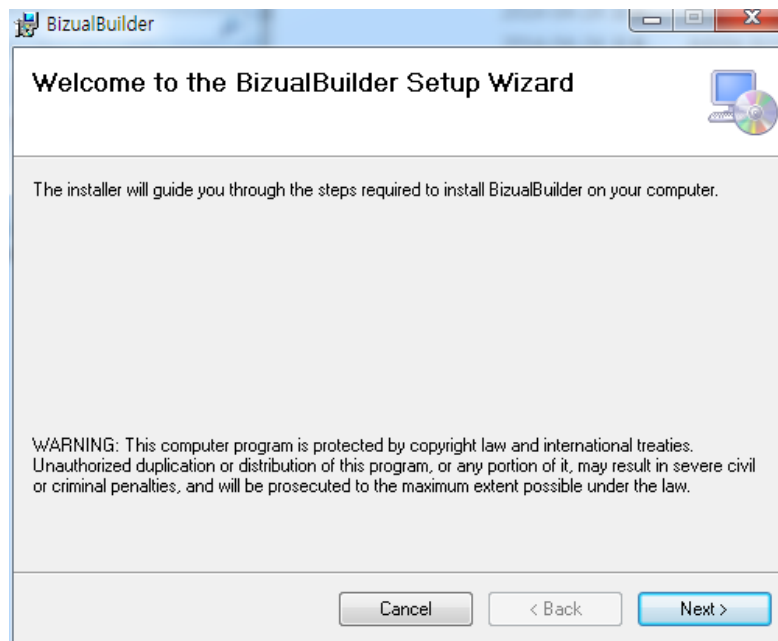
¹ .Net Framework 4.0 is installed automatically.

3.2. Client Release Installation

New installation, download the client release version and install it on your PC. If you have already installed, because the updates are automatically at login, do not need to be installed separately.

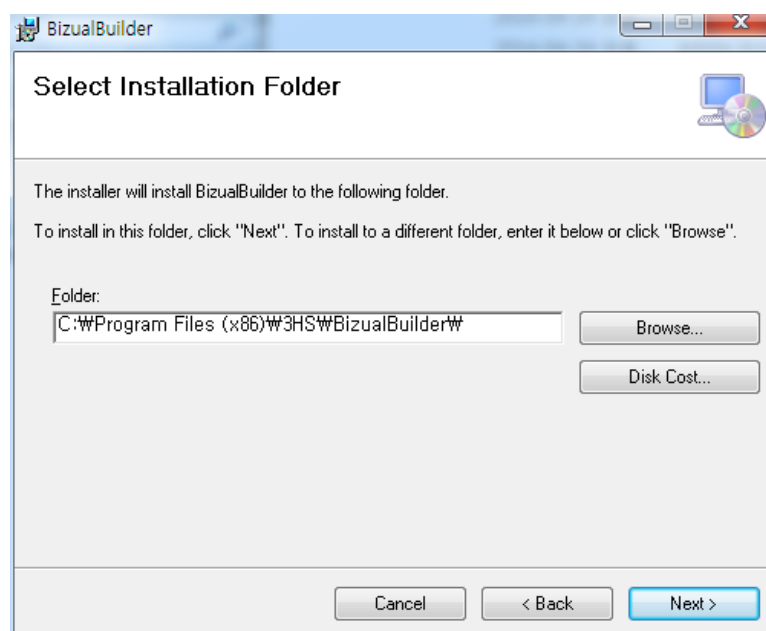
Client installation process is as follows:

- ① Download the client release file (.zip) to a temporary directory by referring to the download site above.
- ② Unpack the downloaded ".zip" file.
- ③ Execute the "setup.exe" file to install after decompressing.



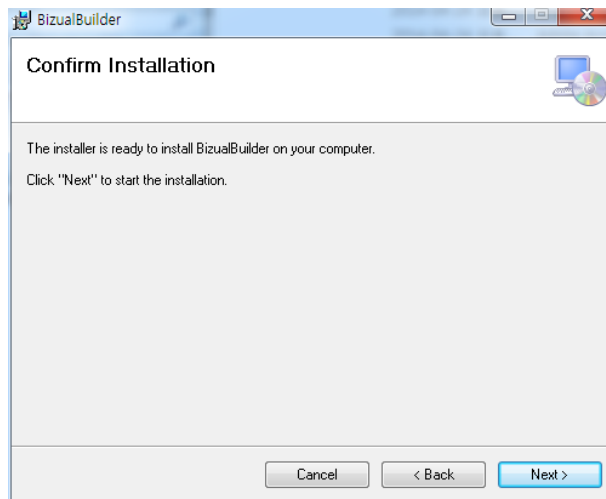
[Figure 3-1] Installation Wizard

- ④ After click the "Next" button, select the installation location.



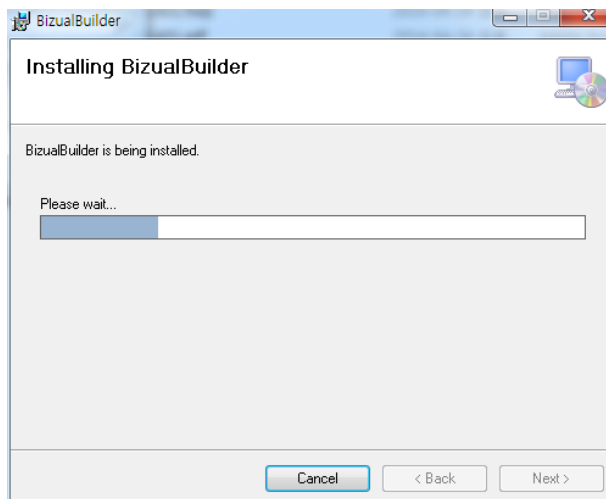
[Figure 3-2] Select Installation Folder

- ⑤ In the confirmation window of the installation, click the "Next" button to install progress.



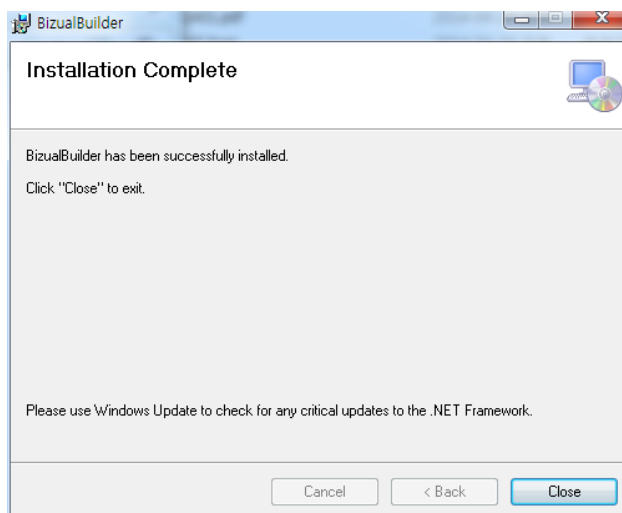
[Figure 3-3] Confirm Installation

- ⑥ Check that the installation proceeds.



[Figure 3-4] Installing

- ⑦ Verify that the installation is complete and finish the installation by clicking the "Close" button.



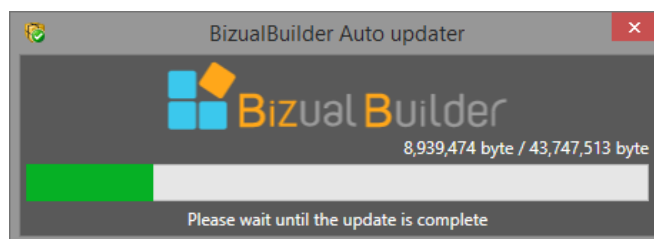
[Figure 3-5] Installation Complete

- ⑧ After the installation, you can run "BizualBuilder Manager" on the desktop. You need to make sure you have successfully logged in to the server.
 - ✓ default ID : admin
 - ✓ default Password : BizualBuilder



[Figure 3-6] Manager Login

- ⑨ If the update of the client is installed on the server, process for automatic updates will be in progress. When the update is complete, the login window is automatically displayed again.



[Figure 3-7] Automatic Update

4. Uninstall Client

On Windows systems, use "Control Panel" to uninstall the client.

Client uninstallation process is as follows:

- ① Run the "Control Panel" and select "Uninstall a program".
- ② Select the "BizualBuilder" product from the list of installed programs. And run "Uninstall" to uninstall.
- ③ Click the "Yes" button to proceed.

Unauthorized copy or reuse of the content in this document is prohibited. All rights reserved.

Copyright © 3HS, Inc.

#905, ACE TwinTower 1-cha, 212-1 Guro-dong, Guro-gu, Seoul, Korea

Phone 82 2 866 2012 • Fax 82 2 866 2013 • E-mail rnd@3hs.co.kr